

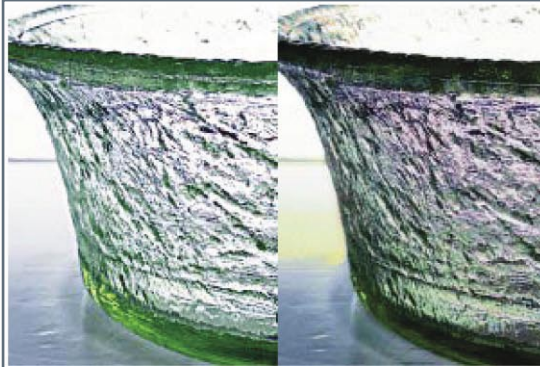
MURANO



Brushed Nickel Side Panels

Custom

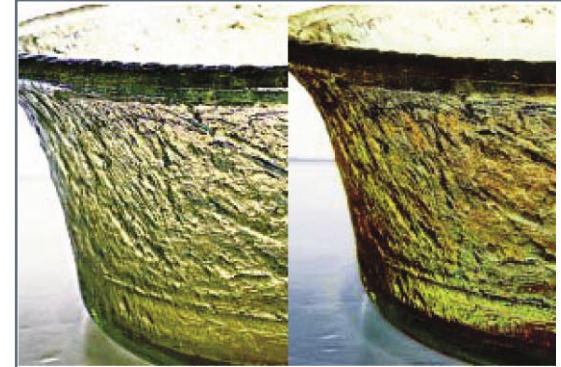
Customize your Murano Spa with a choice of four glass basin colors, three base colors, four arm insert colors and choose from a palette of over 100 cushion colors to match your spa to your environment perfectly!



Crystal

Opalescence

Standard



Hearth

Gold

Custom

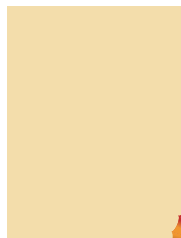
Base colors



Black



White



Wheat



Cinder

Bisque

Dusk

Cordovan

Tabacco

Latte

Seaweed

Cloud

Grayson

Oceanmist

Standard



The Murano Spa now features our CUSTOM COLOR OPTION, allowing salons to choose from an array of cushion colors and textures* at no additional cost**!

*Choose from our palette of over 100 colors, contact European Touch for further information • ** For custom colors, add 4 - 6 weeks to lead time when ordering.

Important Notice: Please note that while our product photography is the highest quality possible, colors may appear different from the actual product, and depends in large part on the monitor quality and settings from which they are viewed.

© European Touch. Call 800.626.6912 for more information.